

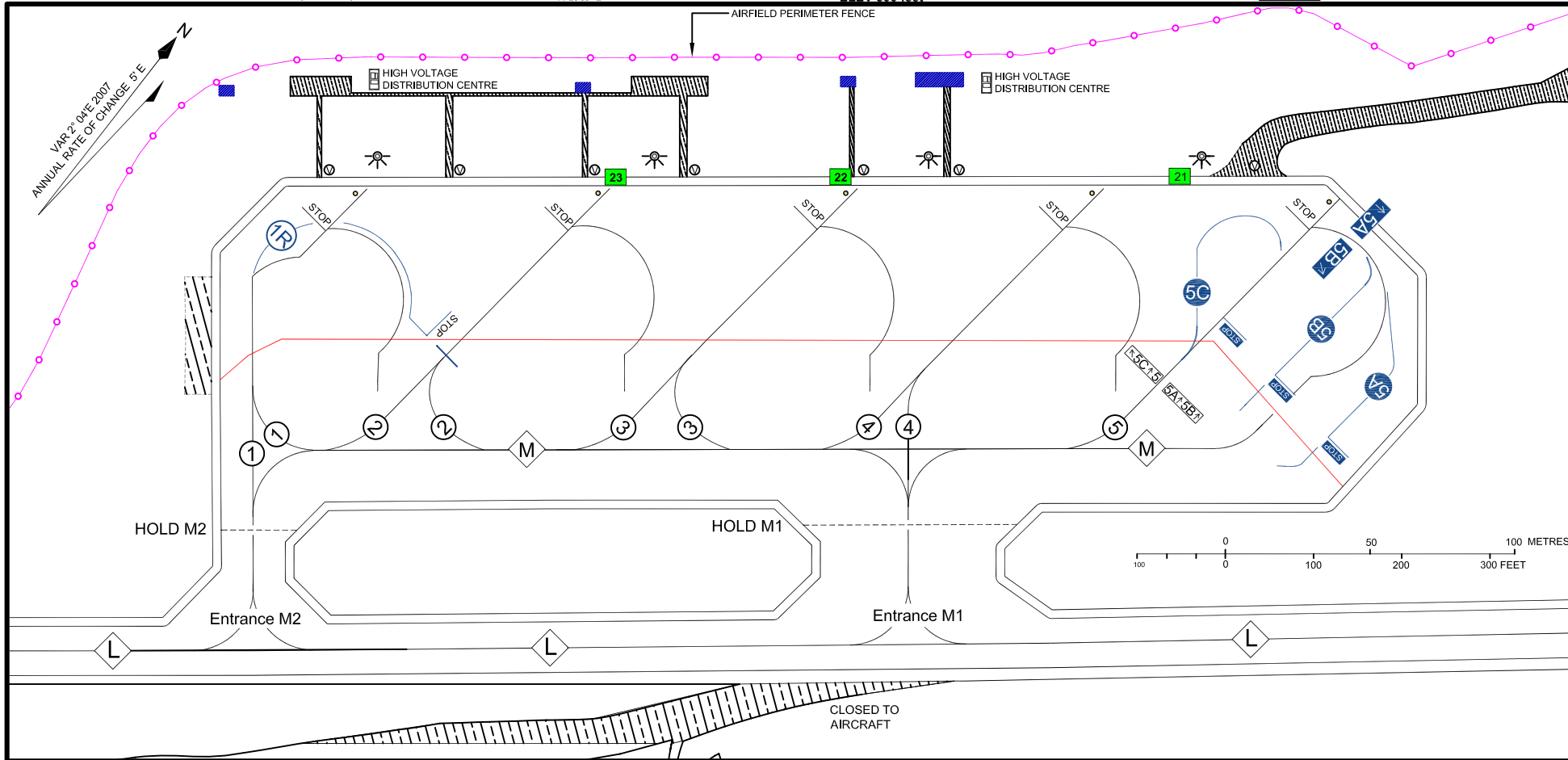
AM 3.06 AIRCRAFT PARKING CHART - ICAO (PARK 4)

ARP 35°51'27" N
14°28'39" E

ELEV 300 feet

EWING 136-100
APRON 121-026

MALTA - LUQA



LEGEND

APRON LIGHTING TOWERS	
AIRCRAFT STAND NUMBER	
PARKING LIMIT LINE	
UNSUITABLE FOR AIRCRAFT USE	
AIRFIELD SECURITY FENCE	
BUILDINGS	
VEHICLE HOLDING POINT	
PORTABLE FIRE-FIGHTING EQUIPMENT	

STAND SIZES

Stand No	Max. Wing Span	Max. Length
1	40.5m	48m
1R (2 CLOSED)	52m	63m
2	40.5m	48m
3	40.5m	48m
4	40.5m	48m
5	40.5m	48m
5 A (5 CLOSED)	24m	27m
5 B (5 CLOSED)	24m	27m
5 C (5 CLOSED)	24m	27m

NOTES

- 1) Pilots manoeuvring on Apron 4 are to use **caution** to reduce the effects of jet blast because of marginal distances from ground vehicles and equipment.
- 2) On power turn-out from stands 1 to 5 all aircraft to follow lead-out lines provided to maintain clearance from aircraft on adjacent stands.
- 3) Maximum span 52m on Taxiway M.
- 4) Aircraft entering or leaving all stands under own power are to do so under guidance of aircraft marshallers.
- 5) Aircraft not exceeding Code D may operate simultaneously on Taxiway Lima and Taxiway Mike.
- 6) TWY L is unrestricted for Code C aircraft as directed by ATC. Code D aircraft are allowed to taxi on own power along the segment between THD RWY 05 and Apron 4 only.
- 7) Caution should be exercised against FOD ingestion by outboard engines on four-engine code D aircraft operating on TWY L due to unbound soft shoulders.

APM: Drawing Office on MISC/REGISTRATION
MALTA INTERNATIONAL AIRPORT (A)
Technical Services Division

First Edition