



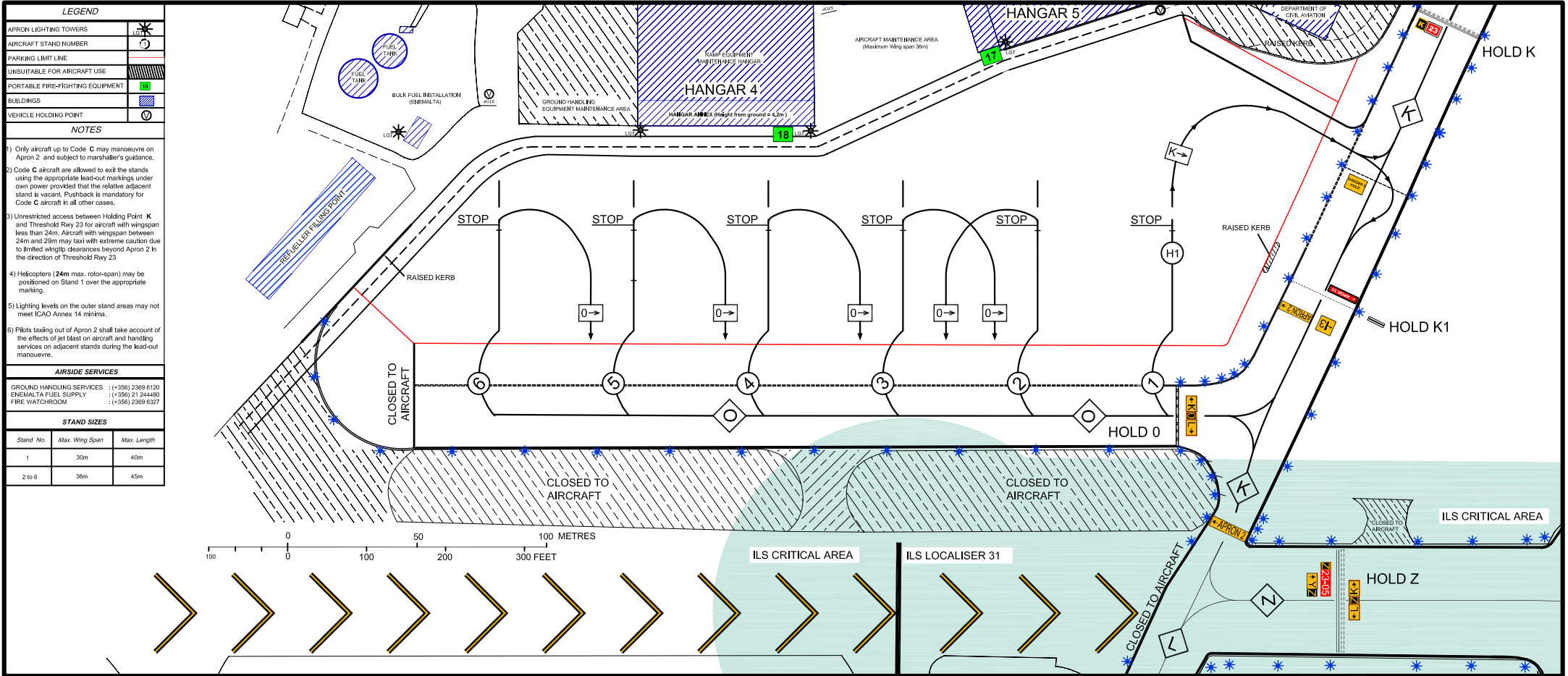
AM 3.04 AIRCRAFT PARKING CHART - ICAO (PARK 2)

ARP 36°51'27" N
14°28'39" E

ELEV 300 feet

TWR 135.1
APRON 124.925

MALTA - LUQA



LEGEND

APRON LIGHTING TOWERS	
AIRCRAFT STAND NUMBER	
PARKING LIMIT LINE	
UNSUITABLE FOR AIRCRAFT USE	
PORTABLE FIRE-FIGHTING EQUIPMENT	
BUILDINGS	
VEHICLE HOLDING POINT	

NOTES

- 1) Only aircraft up to Code C may manoeuvre on Apron 2 and subject to marshaller's guidance.
- 2) Code C aircraft are allowed to exit the stands using the appropriate lead-out markings under own power provided that the relative adjacent stand is vacant. Pushback is mandatory for Code C aircraft in all other cases.
- 3) Unrestricted access between Holding Point K and Threshold Rwy 23 for aircraft with wingspan less than 24m. Aircraft with wingspan between 24m and 29m may taxi with extreme caution due to limited wingtip clearances beyond Apron 2 in the direction of Threshold Rwy 23.
- 4) Helicopters (24m max. rotor-span) may be positioned on Stand 1 over the appropriate marking.
- 5) Lighting levels on the outer stand areas may not meet ICAO Annex 14 minima.
- 6) Pilots taxiing out of Apron 2 shall take account of the effects of jet blast on aircraft and handling services on adjacent stands during the lead-out manoeuvre.

AIRSIDE SERVICES

GROUND HANDLING SERVICES : (+356) 2398 6120
ENEMALTA FUEL SUPPLY : (+356) 21 244480
FIRE WATCHROOM : (+356) 2398 6327

STAND SIZES

Stand No.	Max. Wing Span	Max. Length
1	30m	40m
2 to 6	36m	45m

AR/BS Drawing Office ref: MISC/AM/304/2004
MALTA 4111/04A/04/04 - AIRCRAFT PARKING CHART (R)
Technical Services O/M/No