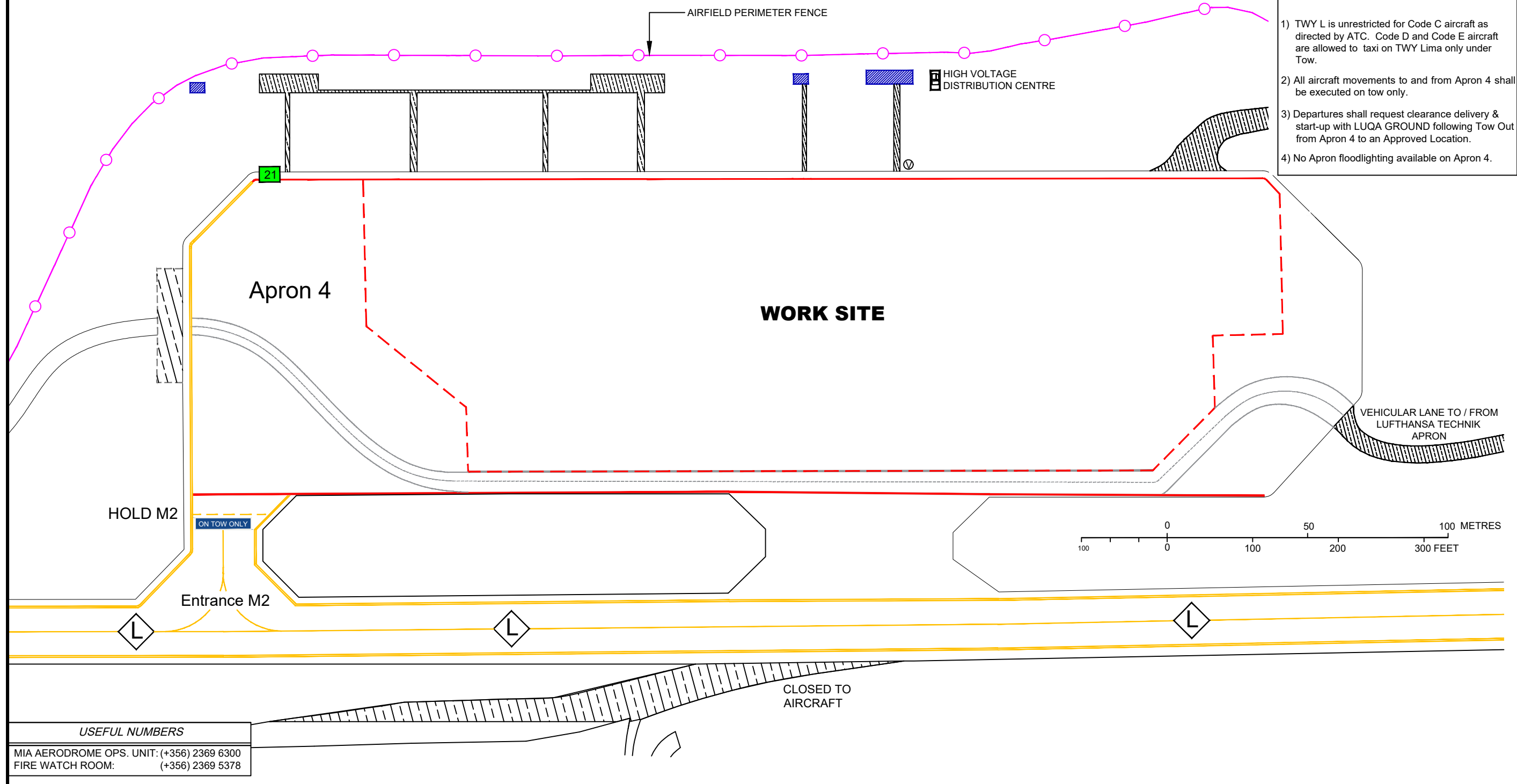


| LEGEND | |
|----------------------------------|--|
| PARKING LIMIT LINE | |
| UNSUITABLE FOR AIRCRAFT USE | |
| AIRFIELD SECURITY FENCE | |
| BUILDINGS | |
| PORTABLE FIRE-FIGHTING EQUIPMENT | |
| VEHICULAR LANE | |
| CONCRETE HOARDING | |

| NOTES | |
|-------|--|
| 1) | TWY L is unrestricted for Code C aircraft as directed by ATC. Code D and Code E aircraft are allowed to taxi on TWY Lima only under Tow. |
| 2) | All aircraft movements to and from Apron 4 shall be executed on tow only. |
| 3) | Departures shall request clearance delivery & start-up with LUQA GROUND following Tow Out from Apron 4 to an Approved Location. |
| 4) | No Apron floodlighting available on Apron 4. |



USEFUL NUMBERS
 MIA AERODROME OPS. UNIT: (+356) 2369 6300
 FIRE WATCH ROOM: (+356) 2369 5378